



Waterhouses CE Primary Academy

"Let your light shine"

Make your light shine, so others will see the good you do and will praise your Father in heaven. Matt 5 v 16

Newsletter 1 : 5-9-23

Dear Parents/Carers,

I do hope you have all had a wonderful summer break whether you have travelled many miles or stayed closer to home. The staff and I are very much looking forward to welcoming back all our pupils and also our new intake of children into Reception and Nursery. I would also like to welcome Mrs Samways, our White Tigers teacher and Mr Prescott who will be teaching music to the children.



Reception and Nursery Pupils

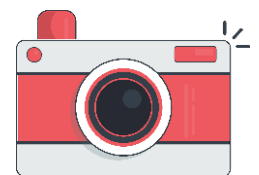
To enable our youngest children to settle in smoothly into school, we are encouraging parents to bring their child into Ladybirds and stay with them for a few minutes. Mrs Hulme, Mrs Bradbury and Mrs Salt will be there to answer any questions you may have. We hope that this will help your child feel confident and comfortable to come into school like the other children after a couple weeks. From October 2nd, parents will be asked to drop them off at the door and come into school with the rest of the children.

Attendance

The governors and QEGSMAT are keen to ensure that pupil punctuality and attendance is of the highest standard. Evidence and research show that pupils who arrive in good time and attend school have the very best chances of progress and success. The Government does not set specific attendance targets, but schools are expected to set their own. An attendance rate of **95%** is generally considered good; this allows for children to miss 9.5 days across the school year. Persistent absence (PA) is defined as an attendance rate of 90% or below. I have attached at the end of this letter a graphic which demonstrates and explains good attendance. At the end of each half term, the school will send out the attendance data for your child for your information. In accordance with Government guidance, holidays in term time will not be authorised and will be referred to the Attendance and Welfare officer.

School Photographer

Alethea Simpson will be coming into school to take photos of individual and siblings on Tuesday 12th September. Parents who have preschool children are welcome to bring them into school to be part of the photos from 8.45am onwards.



Meet the Teacher



We are holding a meet the teacher session to allow you to speak and get to know your child's class teacher. This will be held on Wednesday 6th September from 3.15pm. Each class teacher will be available for you to chat to. They will also hold 2 short presentations where they will outline information regarding their particular class. Session 1 will take place at 3.30pm and the second one will commence at 4.00pm. We hope that you will be able to join us.

After School Clubs

The school office will be sending out details regarding our after-school clubs shortly.

School Swimming

Swimming lessons at school will start next week

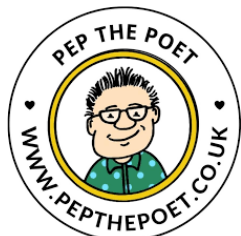
Week beginning : 11-9-23

Ladybirds/Otters/Penguins : Tuesdays

White Tigers : Wednesdays



Pep the Poet



We are delighted to have Pep the Poet visiting our school on Monday 18th September. Grateful thanks to the PTFA for funding this. Pep will be spending time with each class during the day to inspire them to enjoy reading and writing poems. A further letter with additional information will be sent out in due course.

Pep will also be available at the end of school for book signing and any other book purchases.

Special Meal Events

Miss Sophie will be holding several special meal events during the year. Our first event is on Thursday 28th September at 12 noon to celebrate Grandparents Day. More information and how to book and pay will be sent out by the school office later this week.



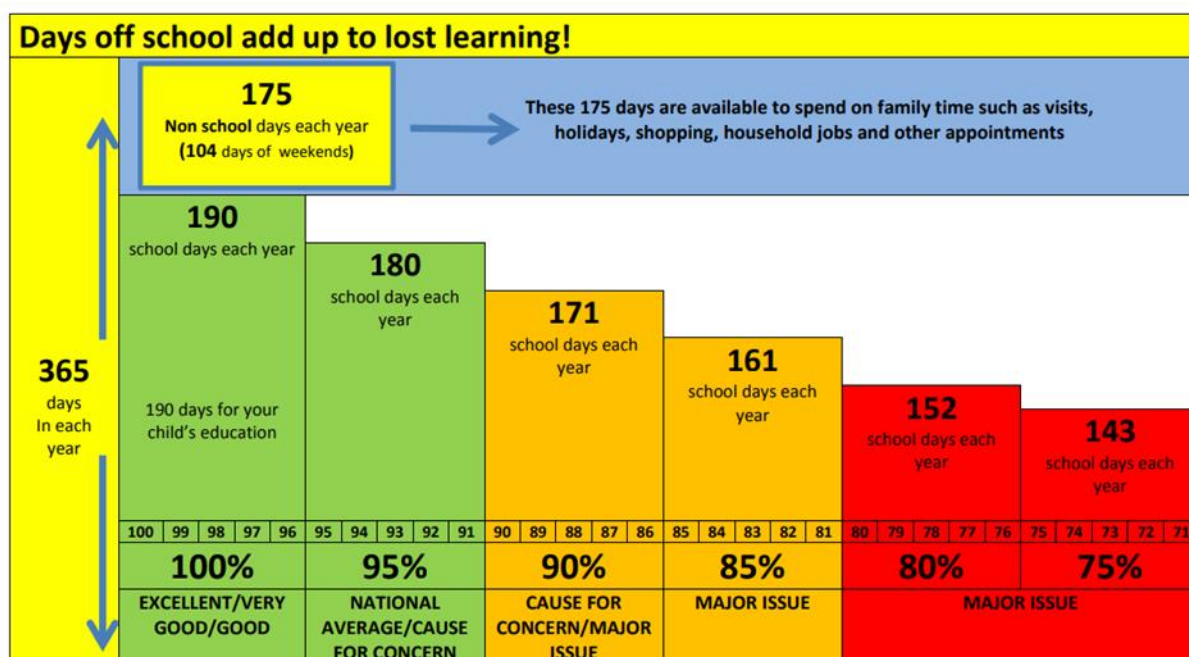
Dates for the Year

Shortly before the holidays I sent out a list of dates for this academic year. This has now had several new events added and I've included it below. It will continue to have other dates added as the year progresses.

Kind regards,

Rachel Linton

Headteacher



Attendance over the course of an Academic Year

Attendance %	Annually	Missed Days in a year	Missed Weeks	Missed Days Over 4 Years	Impact over 4 years
100%	Excellent	0	0	0	
99%	Very good	1.9	0.38	7.6	
98%	Very good	3.8	0.76	15.2	
97%	Very good	5.7	1.14	22.8	
96%	Good	7.6	1.52	30.4	Approx. a half term
95%	National Average	9.5	1.9	38	1/5 of a year
94%	Below Nat. Average	11.4	2.28	45.6	
93%	Below Nat. Average	13.3	2.66	53.2	
92%	Requires improvement/worrying	15.2	3.04	60.8	Approx. 1 term
91%	Requires improvement/cause for concern	17.1	3.42	68.4	
90%	Cause for concern	19	3.8	76	2/5 of a year
89%	Serious concern	20.9	4.18	83.6	
85%	Major issue	28.5	5.7	114	3/5 of a year
80%	Major issue	38	7.6	152	4/5 of a year

Waterhouses CE Primary Academy and Nursery

Dates for the Year 2023-4

Autumn 2023	
4 Sept	INSET day for staff Governors Meeting
5 Sept	School opens for pupils Autumn 1 Reception Baseline Assessments to be completed by 17 th October
6 Sept	Meet the Teacher @ 3.30pm - 4.30pm
12 Sept	Alethea Simpson Photographer in school for individual and sibling portraits
18 Sept	Pep the Poet visit. Thank you to the PTFA for funding this. Pep will be available at the end of the day to purchase his books. You also will have had a link to preorder from his website should you wish in September
26 Sept	Y3-6 KS2 Football Primary Stars Cluster @ Parwich
28 Sept	Grandparents Lunch @ 12 noon. More information to follow.
6 Oct	9.15am Celebration Assembly
13 Oct	Whole School Geography Day
17 Oct	Y3-6 KS2 Tag Rugby Primary Stars Cluster @ Parwich
19 Oct	Parents Evening 3.45-6.00pm
23 Oct	Y5/6 to visit Leek Fire Station : Safe and Sound : A series of workshops relating to keeping safe at home and out and about. More information to follow.
24 Oct	Parents Evening 3.45-6.00pm
26 Oct	School closes for half term
27 Oct	INSET Day for staff
6 Nov	School opens for pupils Autumn 2
7 Nov	Governors Meeting
28 Nov	Y3-6 KS2 Cross Country Primary Stars Cluster @ Parwich
1 Dec	9.15am Celebration Assembly PTFA Christmas Fair : details to follow
8 Dec	9.30am : Ladybirds Nativity Play
11 Dec	Pantomime Visit: Buxton Opera House : Details to follow Children need to be at school for 8.30am
14/15 Dec	Christmas Play
22 Dec	School closes for Christmas holiday

Spring 2024

8 Jan	INSET day for staff
9 Jan	School opens for pupils Spring Term
10-12 Jan	Y5/6 Residential trip to Stanley Head : Information to follow
19 Jan	Whole School History Day
30 Jan	Parents Evening
2 Feb	9.15am Celebration Assembly
8 Feb	Parents Evening
9 Feb	School closes for half term
19 Feb	School opens for pupils Spring 2
26 Feb	Whole School Science Day
5 Mar	Governors Meeting
12 Mar	Y5-6 KS2 Netball Primary Stars Cluster @ Parwich
14 Mar	Mother's Day lunch @ 12 noon. More information to follow
19 Mar	Y3-4 KS2 Primary Stars Cluster @ Parwich
15 Mar	9.15am Celebration Assembly
22 Mar	School closes for Easter holiday

Summer 2024

8 April	INSET day for staff
9 April	Children start Summer 1
30 April	Y3-6 KS2 Mega Athletics Primary Stars Cluster @ Parwich
3 May	9.15am Celebration Assembly
13-16 May	KS2 SATS
20 May	Whole School Design Technology Day
21 May	Y3-6 KS2 Quick Cricket Primary Stars Cluster @ Parwich Governors Meeting
3 June	INSET Day for staff
4 June	Children start Summer 2
4 - 14 June	Y4 MTC during these 2 weeks
10-14 June	Y1 Phonics Screening
11 June	Y3-6 KS2 Rounders Primary Stars Cluster @ Parwich
13 June	Father's Day lunch @12 noon. More information to follow
25 June	Y3-6 KS2 Sports Day Primary Stars Cluster @ Parwich Governors Meeting
5 July	Sports Day
8 July	Whole School Art Day 3.30pm Art Exhibition : Parents/Carers are welcome to come and see the art work the children have created today.
12 July	9.15am Celebration Assembly
18 July	Leaver's Assembly 2:30pm
19 July	School closes for Summer 2