



Waterhouses CE Primary Academy

“Let your light shine”

Make your light shine, so others will see the good you do and will praise your Father in heaven. Matt 5 v 16

Newsletter 2 : 18-9-23

Dear Parents/Carers,

We have had a good start to the year and the children look so smart in their uniforms!

Thank you to all the parents who came along to the Meet the Teacher on 6th September. I hope you found it valuable and useful to support your child with their learning. The staff have sent out the information which they shared in case you were unable to make the meetings.



We have had a fabulous day with Pep the Poet! He has shared some of his poems as well as working with all our children to engage them with a love of poetry. Thank you to Pep for such a great day and also the PTFA for funding the visit.



PTFA

A big thank you for Emily Keating and Kate Render who have given their time as members of the PTFA for several years. At the meeting on Friday, Charlotte Morris (Chair) and Sarah Hunt (Secretary) were elected as members of

the committee, along with Katie Jensen who has continued in her role as Treasurer. Please do offer your help when they hold events throughout the year as the funds raised benefit every child in school.

Headlice

We have some reported cases of Headlice in school. Please can you check your child's hair and treat accordingly. Please follow the guidance at set out from the NHS website.

[Head lice and nits - NHS \(www.nhs.uk\)](http://www.nhs.uk)

Reception and Nursery Pupils

To enable our youngest children to settle in smoothly into school, we are encouraging parents to bring their child into Ladybirds and stay with them for a few minutes. Mrs Hulme, Mrs Bradbury and Mrs Salt will be there to answer any questions you may have. We hope that this will help your child feel confident and comfortable to come into school like the other children after a couple weeks. From October 2nd, parents will be asked to drop them off at the door and come into school with the rest of the children.

Open Evening

Queen Elizabeth's Grammar School in Ashbourne are holding an open evening on Wednesday 27th September from 4.30pm to 6.30pm. All welcome.

Attendance

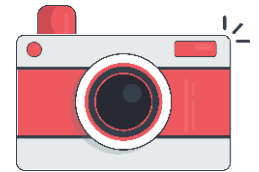
The governors and QEGSMAT are keen to ensure that pupil punctuality and attendance is of the highest standard. Evidence and research show that pupils who arrive in good time and attend school have the very best chances of progress and success. The Government does not set specific attendance targets, but schools are expected to set their own. An attendance rate of **95%** is generally considered good; this allows for children to miss 9.5 days across the school year. Persistent absence (PA) is defined as an attendance rate of 90% or below. At the end of each half term, the school will send out the attendance data for your child for your information. In accordance with Government guidance, holidays in term time will not be authorised and will be referred to the Attendance and Welfare officer.

Attendance Matters



School Photographer

As it was wet and Alethea takes her photos outside, she will now be coming into school to take photos of individual and siblings on Wednesday 4th October. Parents who have preschool children are welcome to bring them into school to be part of the photos from 8.45am onwards. Let's hope for a dry day!



School Swimming

Swimming lessons at school: Please ensure your child has named clothing, swimwear and towel.

Ladybirds/Otters/Penguins : Tuesdays

White Tigers : Wednesdays



Special Meal Events

Miss Sophie will be holding several special meal events during the year. Our first event is on Thursday 28th September at 12 noon to celebrate Grandparents Day. Please book your meal at the school office by 20th September. Due to food ordering schedules, we are unable to accept any bookings after this day.



Harvest and Celebration Worship



Our first celebration worship will be on Friday 6th October at 9.15am. We will also be holding our Harvest Service as part of this. This year, we are asking for donations for Ashbourne Foodbank and the Community Cupboard which is based a Cauldon Church.

Donations of tinned, packet and fresh food is welcomed along with household items such as laundry and cleaning products.

Bottle Bingo



A date for your diary : Thursday 26th October at 6pm. Bingo starts at 6.30pm

After the success of our chocolate bingo last Easter, the PTFA are holding a “bottle bingo”



The children can wear non uniform on Friday 20th October if they bring a donation of anything in a bottle. This could be anything from bubble bath to ketchup to juice to wine! These will be made up into hampers as prizes for the bingo! All donations should be handed into to the school office. Donations can be dropped off from now until 25th October. Thank you for your support.

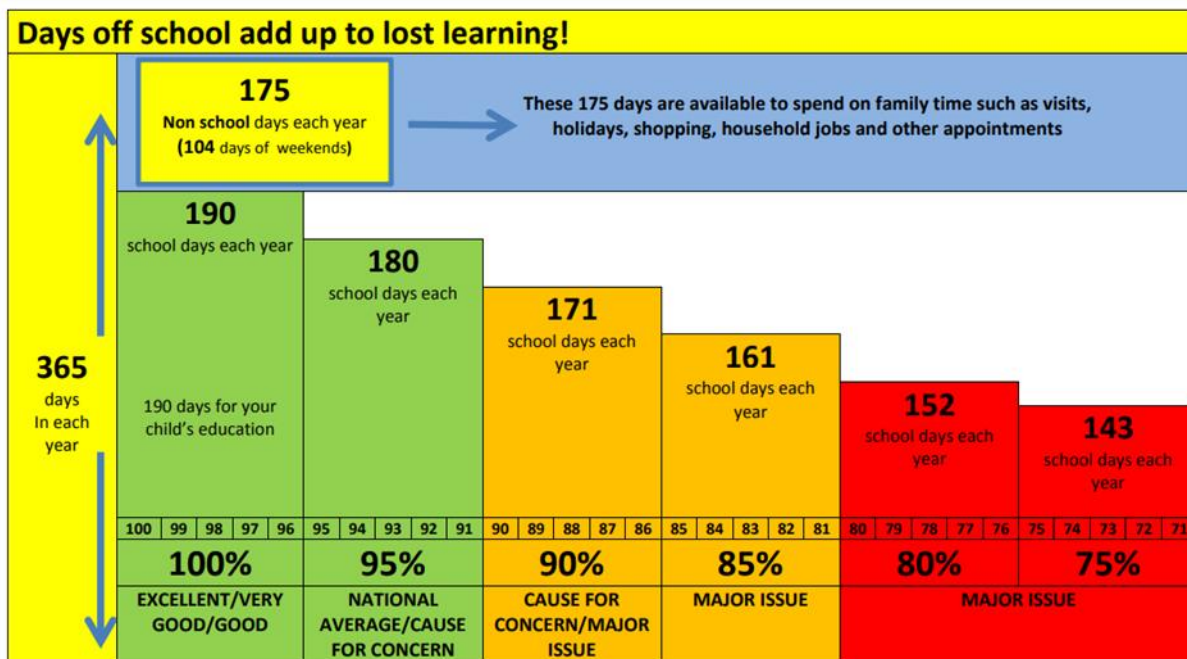
Primary Stars Cluster Sports

All Y3-6 will be attending the cluster sports on Tuesday 26th September at Parwich. A letter outlining the event will be sent out shortly.

Kind regards,

Rachel Linton

Headteacher



Attendance over the course of an Academic Year

Attendance %	Annually	Missed Days in a year	Missed Weeks	Missed Days Over 4 Years	Impact over 4 years
100%	Excellent	0	0	0	
99%	Very good	1.9	0.38	7.6	
98%	Very good	3.8	0.76	15.2	
97%	Very good	5.7	1.14	22.8	
96%	Good	7.6	1.52	30.4	Approx. a half term
95%	National Average	9.5	1.9	38	1/5 of a year
94%	Below Nat. Average	11.4	2.28	45.6	
93%	Below Nat. Average	13.3	2.66	53.2	
92%	Requires improvement/worrying	15.2	3.04	60.8	Approx. 1 term
91%	Requires improvement/cause for concern	17.1	3.42	68.4	
90%	Cause for concern	19	3.8	76	2/5 of a year
89%	Serious concern	20.9	4.18	83.6	
85%	Major issue	28.5	5.7	114	3/5 of a year
80%	Major issue	38	7.6	152	4/5 of year

Waterhouses CE Primary Academy and Nursery

Dates for the Year 2023-4

Autumn 2023	
26 Sept	Y3-6 KS2 Football Primary Stars Cluster @ Parwich
28 Sept	Grandparents Lunch @ 12 noon. More information to follow.
6 Oct	9.15am Harvest and Celebration Assembly
13 Oct	Whole School Geography Day
17 Oct	Y3-6 KS2 Tag Rugby Primary Stars Cluster @ Parwich
19 Oct	Parents Evening 3.45-6.00pm
23 Oct	Y5/6 to visit Leek Fire Station : Safe and Sound : A series of workshops relating to keeping safe at home and out and about. More information to follow.
24 Oct	Parents Evening 3.45-6.00pm
26 Oct	Bottle Bingo : In aid of the PTFA School closes for half term
27 Oct	INSET Day for staff
6 Nov	School opens for pupils Autumn 2
7 Nov	Governors Meeting
28 Nov	Y3-6 KS2 Cross Country Primary Stars Cluster @ Parwich
1 Dec	9.15am Celebration Assembly PTFA Christmas Fair : details to follow
8 Dec	9.30am : Ladybirds Nativity Play
11 Dec	Pantomime Visit: Buxton Opera House : Details to follow Children need to be at school for 8.30am
14 Dec	Christmas Nativity : Ladybirds Class : details to follow
20 Dec	Community and School Carol Service with mince pies to be held in school : 6pm All Welcome.
22 Dec	School closes for Christmas holiday
Spring 2024	
8 Jan	INSET day for staff
9 Jan	School opens for pupils Spring Term
10-12 Jan	Y5/6 Residential trip to Stanley Head : Information to follow
19 Jan	Whole School History Day
30 Jan	Parents Evening
2 Feb	9.15am Celebration Assembly
8 Feb	Parents Evening
9 Feb	School closes for half term
19 Feb	School opens for pupils Spring 2
26 Feb	Whole School Science Day
5 Mar	Governors Meeting
12 Mar	Y5-6 KS2 Netball Primary Stars Cluster @ Parwich
14 Mar	Mother's Day lunch @ 12 noon. More information to follow
19 Mar	Y3-4 KS2 Primary Stars Cluster @ Parwich
15 Mar	9.15am Celebration Assembly
21 Mar	Penguins and Otters Play : 2pm details to follow
22 Mar	School closes for Easter holiday
Summer 2024	
8 April	Children and staff start Summer 1
30 April	Y3-6 KS2 Mega Athletics Primary Stars Cluster @ Parwich
3 May	9.15am Celebration Assembly

13-16 May	KS2 SATS
20 May	Whole School Design Technology Day
21 May	Y3-6 KS2 Quick Cricket Primary Stars Cluster @ Parwich Governors Meeting
3 June	INSET Day for staff
4 June	Children start Summer 2
4 - 14 June	Y4 MTC during these 2 weeks
10-14 June	Y1 Phonics Screening
11 June	Y3-6 KS2 Rounders Primary Stars Cluster @ Parwich
13 June	Father's Day lunch @12 noon. More information to follow
25 June	Y3-6 KS2 Sports Day Primary Stars Cluster @ Parwich Governors Meeting
4 July	School Show : 2pm and 6pm : details to follow
5 July	Sports Day
8 July	Whole School Art Day 3.30pm Art Exhibition : Parents/Carers are welcome to come and see the art work the children have created today.
12 July	9.15am Celebration Assembly
18 July	Leaver's Assembly 2:30pm
19 July	School closes for Summer 2